



YubiOn

WindowsLogon Standalone

Setting Manual

Created on 02/07/2022.

Updated on 07/01/2025.

SOFTGIKEN Co., Ltd.

Table of Contents

1. Notes	3
2. How to install	4
3. Launch the Setting tool	6
4. Flow of authenticator registration and various settings	8
5. How to register authenticator	10
6. How to delete an assignment	11
7. How to register a master key	12
8. How to set each function	13
9. How to set up the administrator	17
10. Import/Export settings	19
11. License Information	21
12. How to Uninstall	23
13. Support Information	25
Appendix	26

1. Notes.

- **Permissions required to install “YubiOn WindowsLogon Standalone”**

To install "YubiOn WindowsLogon Standalone" (hereinafter referred to as "the Software"), you need to have administrator privileges on your computer.

If you install the software as a user who does not have administrative privileges, you will need to enter the ID and password of the administrator account at runtime.

*For more information on how to check user privileges, please refer to [13.Support Information: “How to Check Administrative Privileges”](#).

*You need to enable User Account Control (UAC). (By default, it is set to enabled.)

- **Apply the latest updates to Windows**

Before installing this software, please apply the latest Windows Update.

- **About license files**

License registration is required to run this software. Please obtain a license file for license registration from the distributor. If you do not have the license file, please contact the distributor.

- **Authenticators that can be used with this software**

After installing the software, you can only use the authenticator that you purchased with this software. If you need additional authenticators to use, please contact the distributor.

(You can't use your own authenticator.)

- **If you use ATKey**

Fingerprint registration must be completed before using the ATKey with this software. In addition, authentication must be performed in OTP mode (yellow light on) when using the key.

(For details, please refer to the user's manual.)

2. How to install

1. Prepare the installer and license file

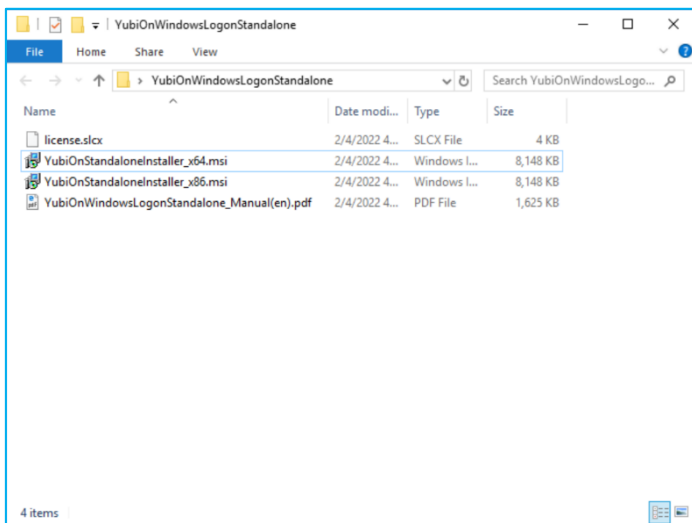
Prepare the installer and license file of this software in any folder.

YubiOnWindowsLogonStandalone_Manual.pdf ...this manual

YubiOnStandaloneInstaller_x64.msi ... Installer for 64bit OS

YubiOnStandaloneInstaller_x86.msi ... Installer for 32bit OS

license.slcx ... license file



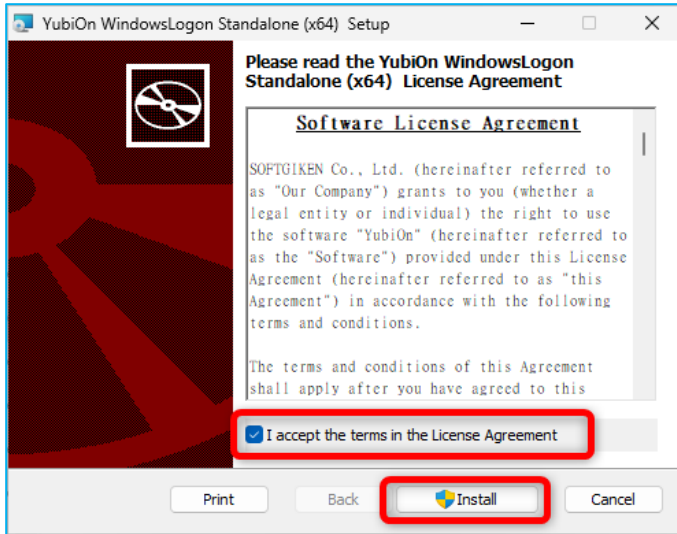
2. Double-click on the msi file that matches the Windows OS you want to install

msi file	OS bit
YubiOnStandaloneInstaller_x64.msi	64bit
YubiOnStandaloneInstaller_x86.msi	32bit

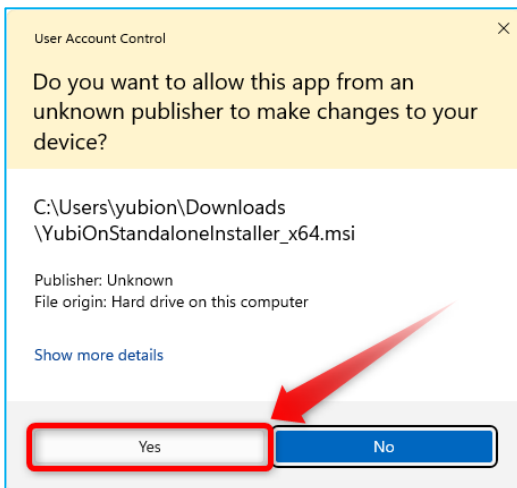
*If you don't know what environment you are using, please refer to

[13.Support Information: "How to check your OS environment"](#).

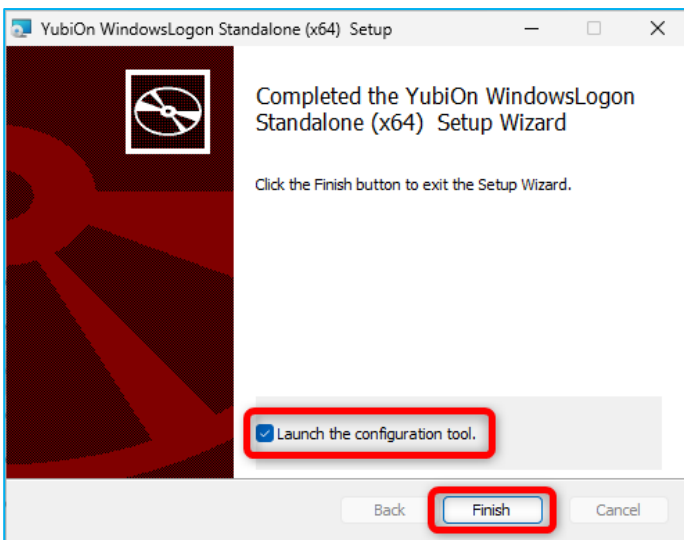
3. Follow the installation screen to install the software



Please read and agree to the software license terms.



If you see a User Account Control message, click "Yes".



Click "Finish" to complete the installation.

The WindowsLogon Standalone Setting Tool will be added to the Start menu.

If you check the "Launch the configuration tool" checkbox, the Setting tool will be launched continuously.

3. Launch the Setting tool

To activate YubiOn WindowsLogon Standalone, launch the Setting tool and perform the initial settings.

First, launch the Setting tool.

Changed the name in the configuration tool

Since Ver. 3.6.0, "YubiKey" in the tool has been changed to "authenticator".

1. Launch YubiOn Setting Tool

If you have checked " Launch configuration tool" when installation is completed, it will start automatically. Or click "WindowsLogon Standalone Setting Tool" from the Start menu.

*For Windows 10, it is under the "YubiOn" folder.

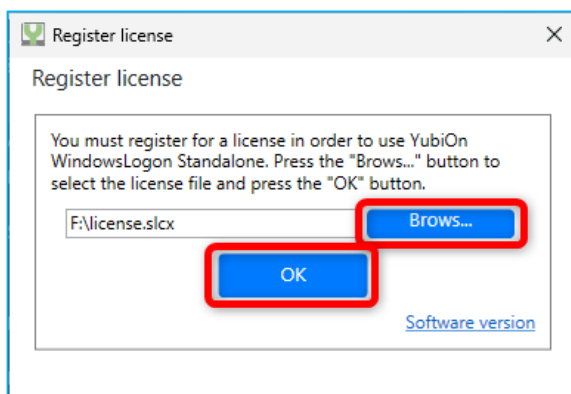
*The Setting tool should be run by a user with administrative privileges.

*When assigning to an AD account, start with the AD account logged on.

2. Load the license file

The first time you start the program, the license registration window will be displayed. Click the Browse button, load the license file (license.slcx), and click the OK button.

*If you do not have the license file, you will not be able to run this software. If you do not have it, please contact the distributor.



3. Input the OTP output from authenticator to display the setting screen

Insert the authenticator into the USB port and enter the one-time password (OTP).

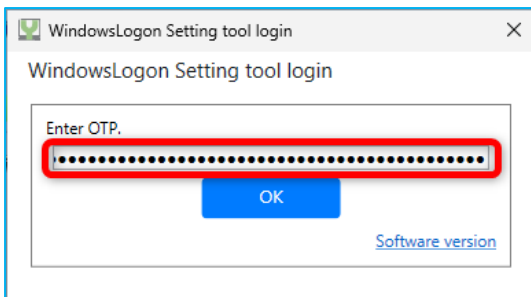
If you use ATKey

Fingerprints must be registered in ATKey in advance.

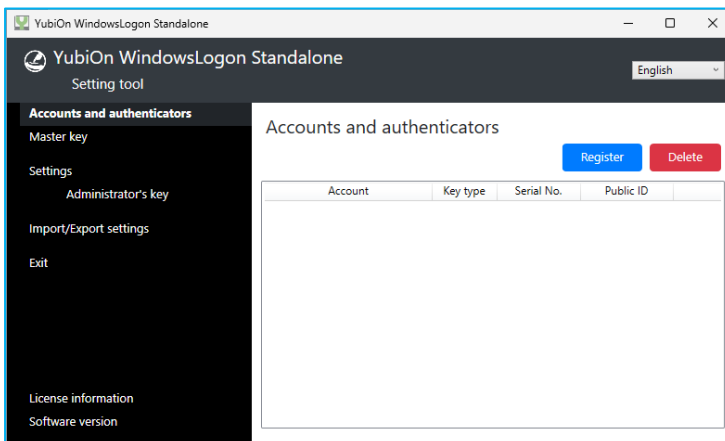
If the device is in FIDO2 mode (lit blue) when you use it, please switch to OTP mode (lit yellow) by pressing the switch on the side of the device.

After switching, touch the sensor section with the fingerprint-registered finger to output OTP.

*Please refer to the User's Manual (ATKey version) for registration instructions.



If the input value of the OTP entered is normal, the Setting tool will start.



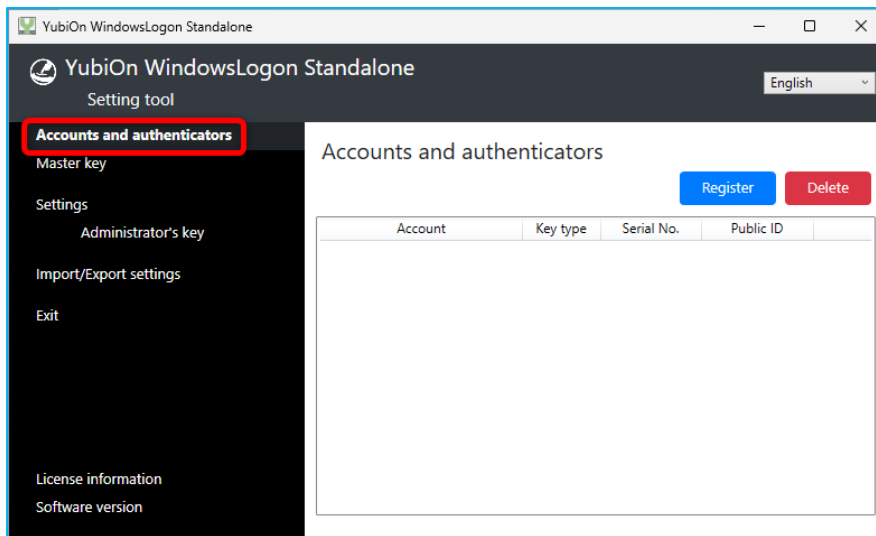
4. Flow of authenticator registration and various settings

This is the process of setting up two-factor authentication with the authenticator.

1. Register your authenticator

On the Accounts and authenticators screen, register the authenticator and account assignment to be used.

Please refer to "[5.How to register authenticator](#)" for registration instructions.



2. Enable the YubiOn setting

In the Settings screen, turn on "Enable authenticator logon". For details, please refer to "[8. How to set each function](#)".

* Do not enable Secure mode until you have confirmed that YubiOn is working.

3. Check the working of YubiOn

Screen lock the device once (Windows key + L). Confirm that you can logon using the "Windows password" and "the authenticator one-time password (OTP)" on the logon screen.



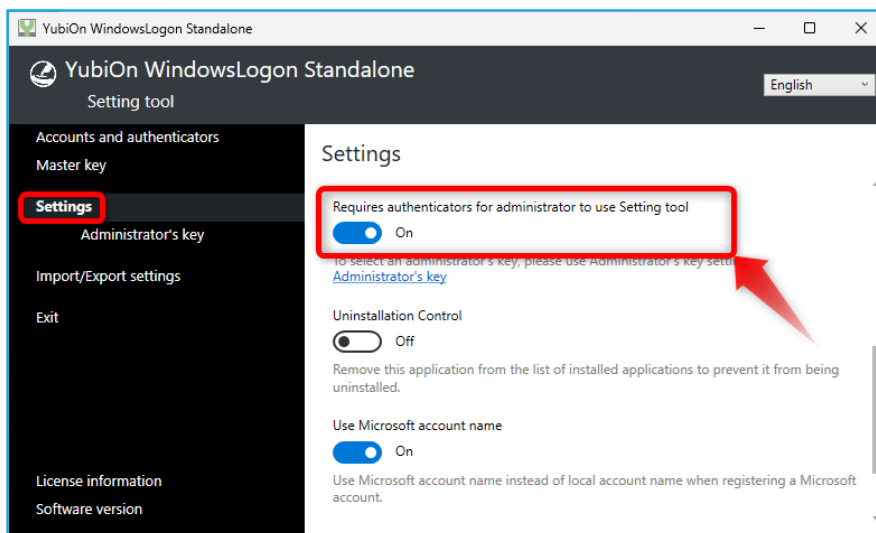
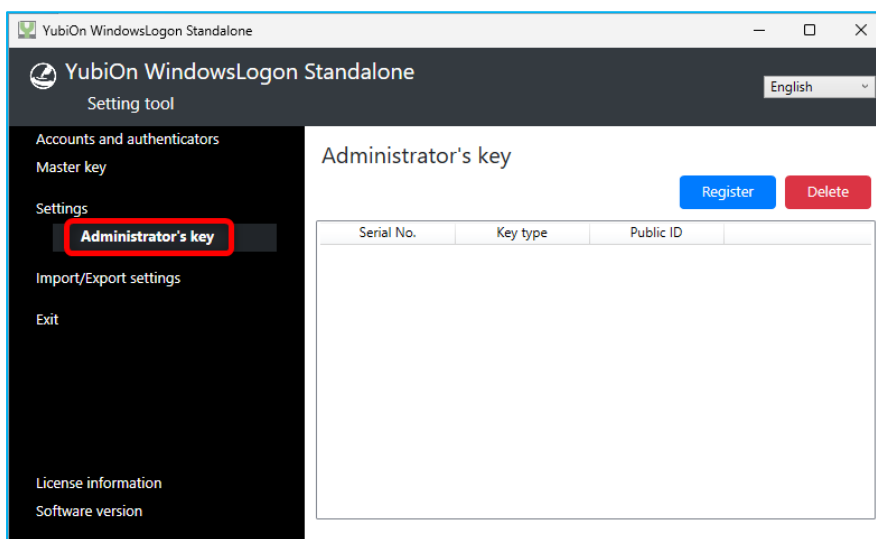
*For details on how to log on, please refer to the separate user's manual.

4. Force logon with authenticator

To force the user to logon with authenticator, turn on the "Enable Secure mode" in the Settings screen. Other settings such as lock function, OTP manual input restriction, and uninstallation control can also be configured here. For details, please refer to ["8. How to set each function"](#).

5. Other settings (administrator settings)

You can register authenticators for administrator on the Authenticator's key screen, and set restrictions on launching the configuration tool on the Settings screen. For details, please refer to ["9. How to set up the administrator"](#).

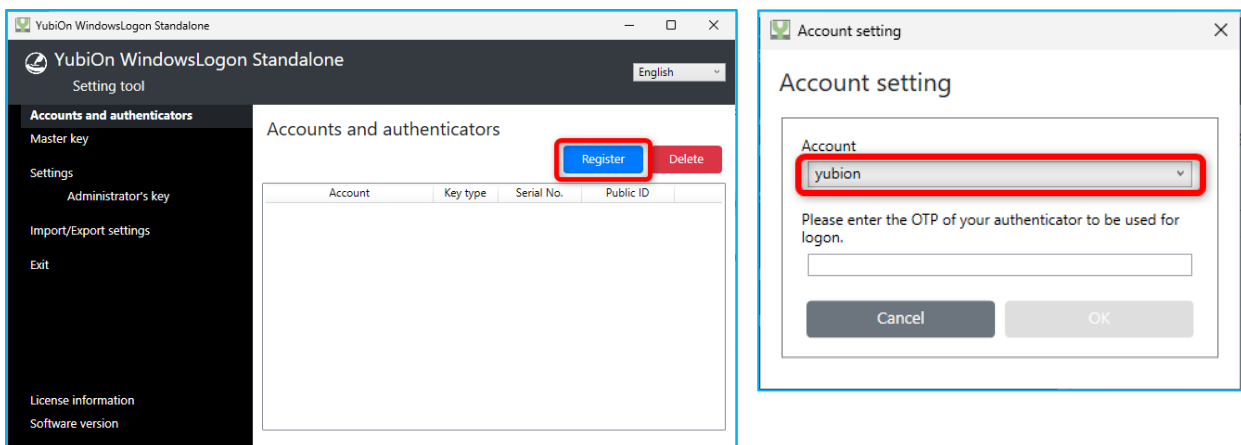


5. How to register authenticator

1. On the "Accounts and authenticators" screen, click the "Register" button
2. Select the authenticator and the account to be assigned

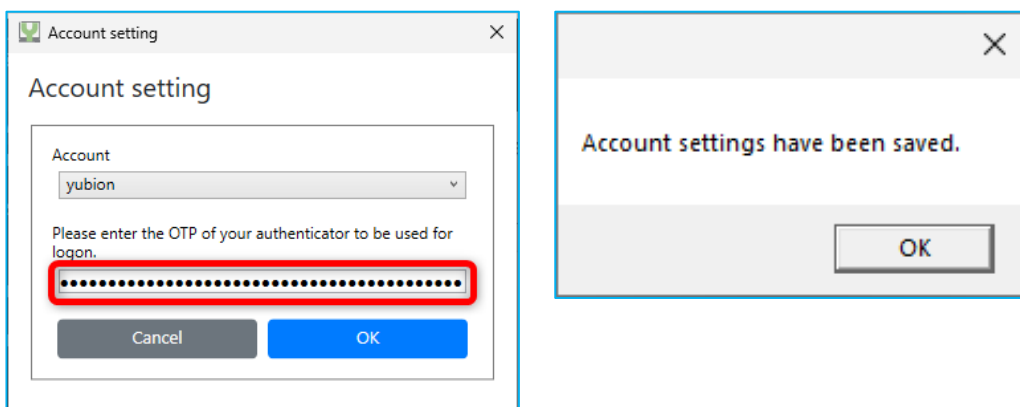
In the Account selection field, select the account to be used for logon.

*The account selection box will only show accounts that can logon to that PC. Domain accounts that have never logged on to that PC will not be shown.



3. Touch authenticator to register

Move the cursor to the OTP input field and plug the authenticator into the USB port. Touch the sensor part of the authenticator (for ATKey, you need to press the button on the side to switch to OTP output mode) and enter the one-time password (OTP). After entering the OTP, click "OK" to complete the assignment registration.



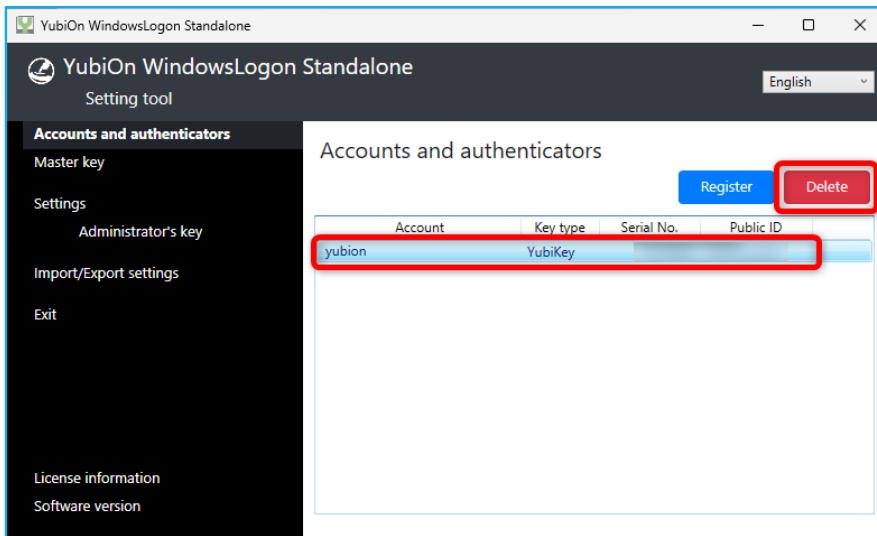
*When registering for the first time, a confirmation message will appear asking if logon by the authenticator is enabled. This setting can be changed later in the Settings section.

6. How to delete an assignment

You can delete your account and authenticator assignment.

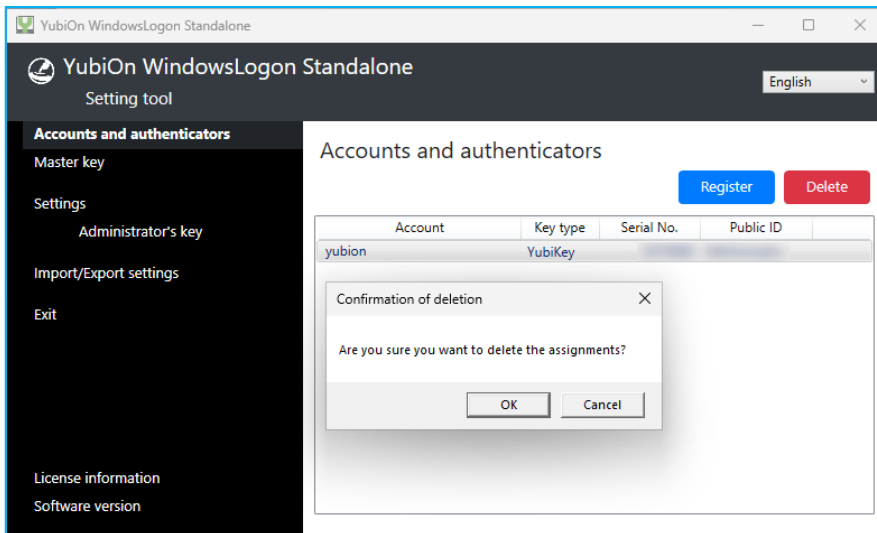
1. Select the assignment you want to delete

Select the account and authenticator assignment you want to delete and click the "Delete" button.



2. Execute delete

In the confirmation window, click the "OK" button to execute the deletion.

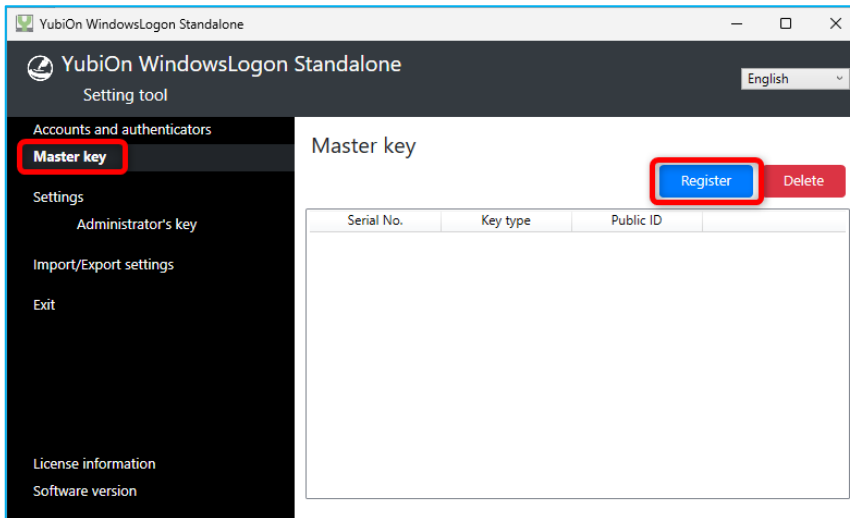


*If the deletion results in the deletion of all assignments, including master key registrations, "Enable authenticator logon" will be automatically switched off.

7. How to register a master key

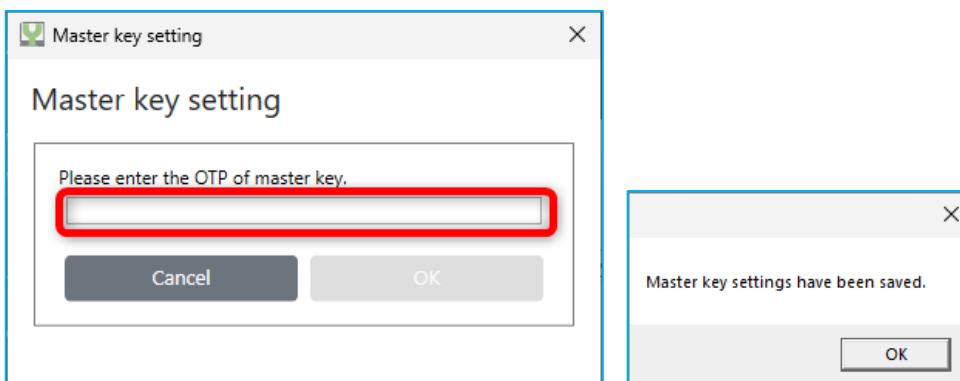
You can register authenticators (master key) that can be used to log on to all accounts, regardless of their assignment.

1. Click the "Register" button on the "Master key" screen



2. Register your authenticator

Move the cursor to the OTP input field and plug the authenticator into the USB port. Touch the sensor part of the authenticator (for ATKey, you need to press the button on the side to switch to OTP output mode) and enter the one-time password (OTP). After entering the OTP, click "OK" to complete the assignment registration.



3. The registered authenticators will be displayed in the list

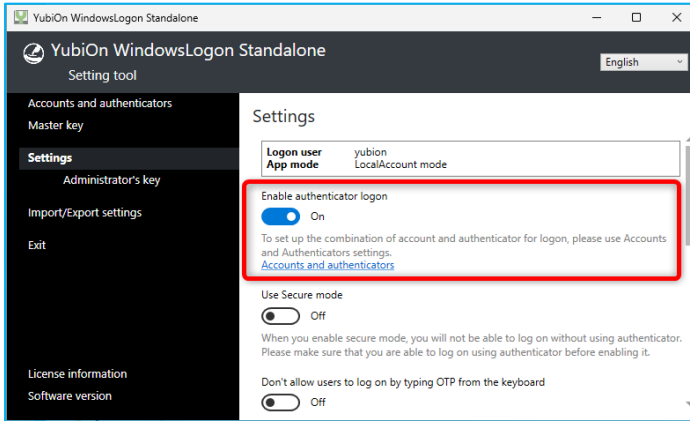
The authenticator registered as the master key will be displayed in the list.

To delete a registration, select the target authenticator from the list and click the "Delete" button.

8. How to set each function

You can configure each function in the Settings screen.

● Enable logon with authenticator



Enables or disables YubiOn.

“OFF”

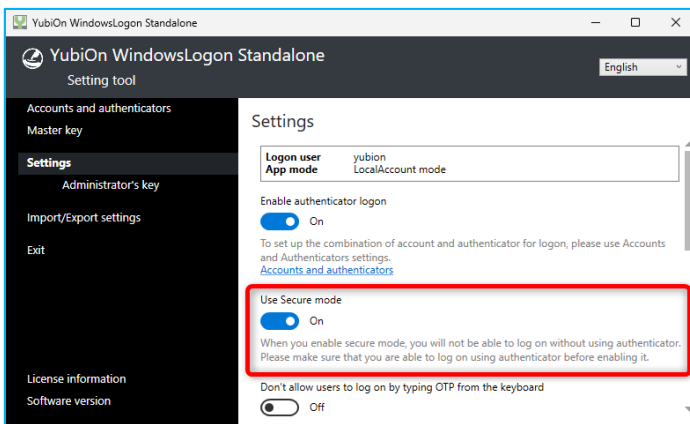
Disable YubiOn. The normal logon method will be used.

“ON”

Enable YubiOn. This will enable both normal logon and logon using the authenticator. By enabling it, the "Use Secure mode" item can be changed.

*If "Accounts and authenticators" or "Master key" is not registered, it cannot be enabled.

● Use Secure mode



Select the operation mode of YubiOn.

“OFF”

You can log on with both normal logon and logon using the authenticator.

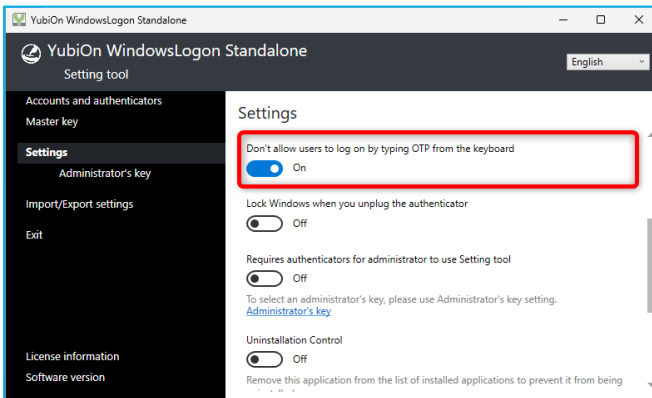
* When this setting is off, normal logon without the authenticator is possible, which is not enough to enhance security. For enhanced security, we recommend setting the Secure mode. Please make sure that you can log on using the authenticator before setting it on.

“ON”

Only logon using the authenticator will be possible.

The authenticator is always required to log on, which enhances security.

● Don't allow users to log on by typing OTP from the keyboard



Sets the input restrictions for OTP.

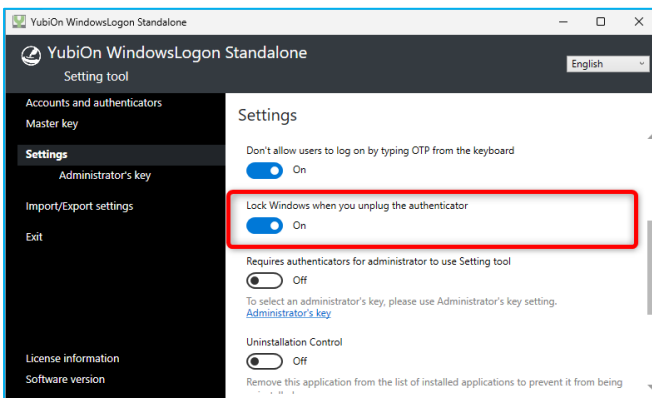
“OFF”

Allow OTP manual input. OTP manual input from the keyboard is possible.

“ON”

Prohibit manual input of OTP. In this state, only input by touching the authenticator is possible. If you enter the OTP manually with the keyboard, you will not be able to log on.

● Lock Windows when you unplug the authenticator



Set the function to automatically lock the screen when the authenticator is removed (lock function).

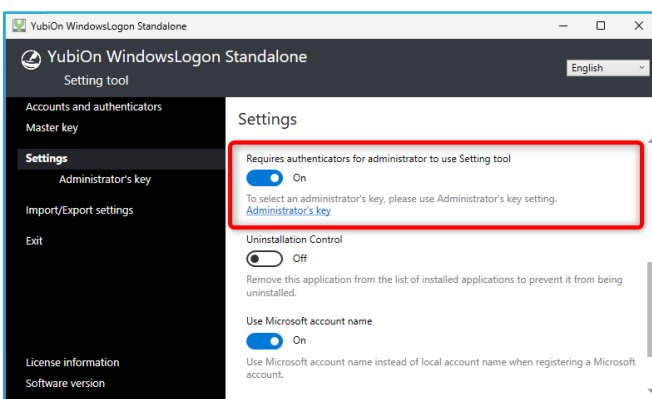
“OFF”

Disable the lock function. Unplugging the authenticator does not switch to the logon screen.

“ON”

Enable the lock function. When you pull out the authenticator, it will automatically switch to the logon screen.

● Requires authenticators for administrator to use Setting tool



Limit authenticator access to the Setting tool.

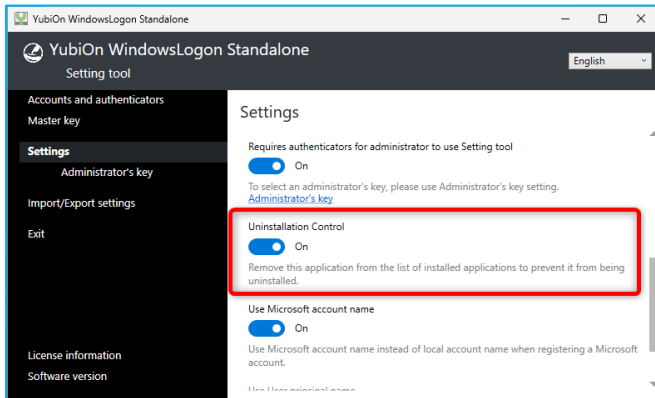
“OFF”

This does not restrict the authenticator access to the Setting tools. All licensed authenticators can be used for the Setting tool.

“ON”

Restrict authenticators that can be used when launching the Setting tool. In this state, only the authenticator registered in "Administrator's key" can use the Setting tool.

● Uninstall Control



Configure settings to inhibit users from uninstalling the software.

“OFF”

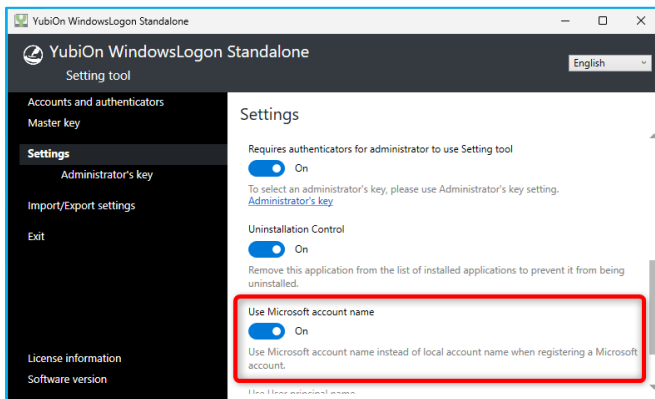
No uninstallation control.

“ON”

This software is not displayed in the list of installed applications in Windows.

To uninstall the software in this state, run the installer used when installing this software, and select "Remove".

● Use Microsoft account name



Configure the display settings when assigning Microsoft accounts in "Accounts and authenticators".

“OFF”

Displays your Microsoft account in local account format*.

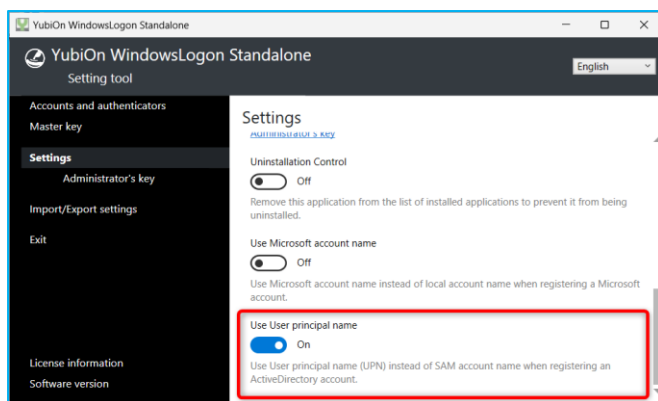
**Example of local account format
user_000*

“ON”

Displays your Microsoft account in Microsoft account format*.

**Example of Microsoft account format
user@example.com*

● Use User principal name



Configure the display settings when assigning AD accounts with "Accounts and authenticators".

This setting can only be configured while logged on as an AD account. The configuration must be done while the AD server is connected.

"OFF"

Displays AD accounts in SAM account format*.

* Example of SAM account format
domain\user

"ON"

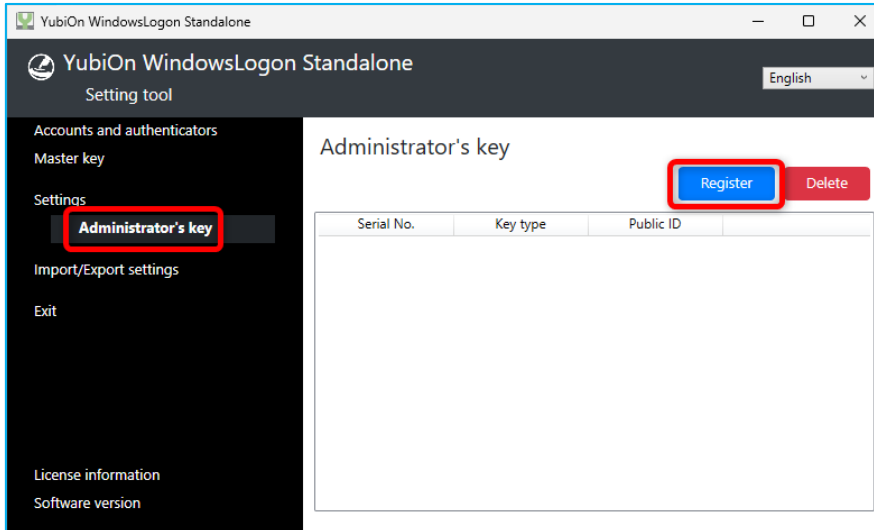
Displays AD accounts in user principal name (UPN) format*.

*Example of user principal name (UPN)
user@domain.com

9. How to set up the administrator

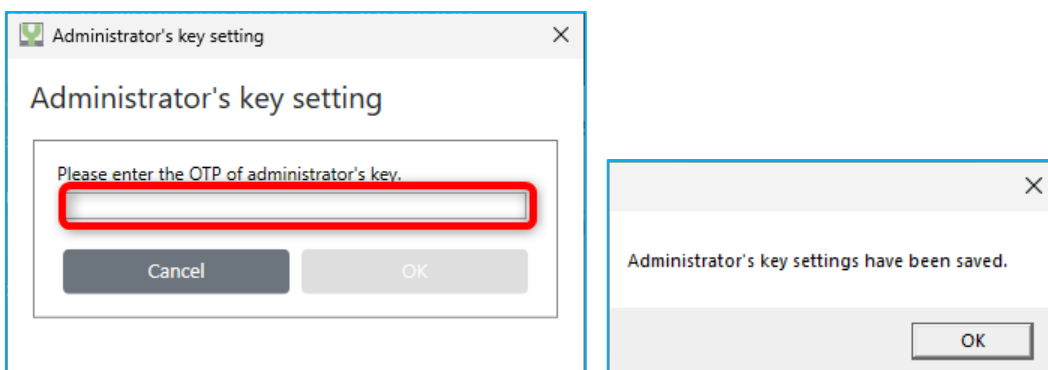
You can register authenticators to allow launching the Setting tool.

1. Click the "Register" button on the "Administrator's key" screen



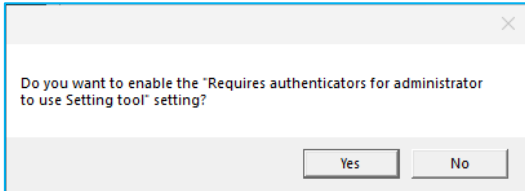
2. Register your authenticator

Move the cursor to the OTP input field and plug the authenticator into the USB port. Touch the sensor part of the authenticator (for ATKey, you need to press the button on the side to switch to OTP output mode) and enter the one-time password (OTP). After entering the OTP, click "OK" to complete registration.

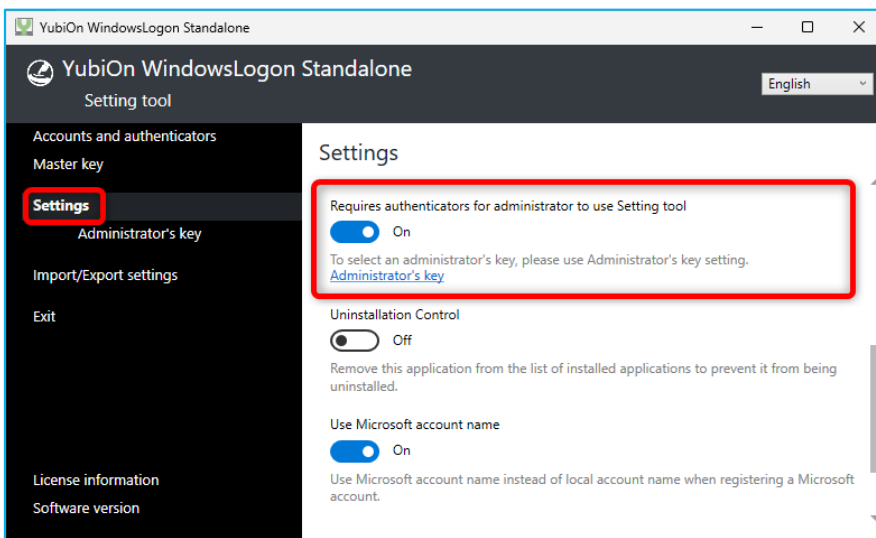


3. Enable "Requires authenticators for administrator to use Setting tool" setting

When you register for the first time, you will be prompted with a confirmation message to activate the settings, click "Yes".



This setting can be changed later in the "Settings" section.



4. The registered authenticator will be displayed in the list

Authenticators registered for the administrator will be shown in the list.

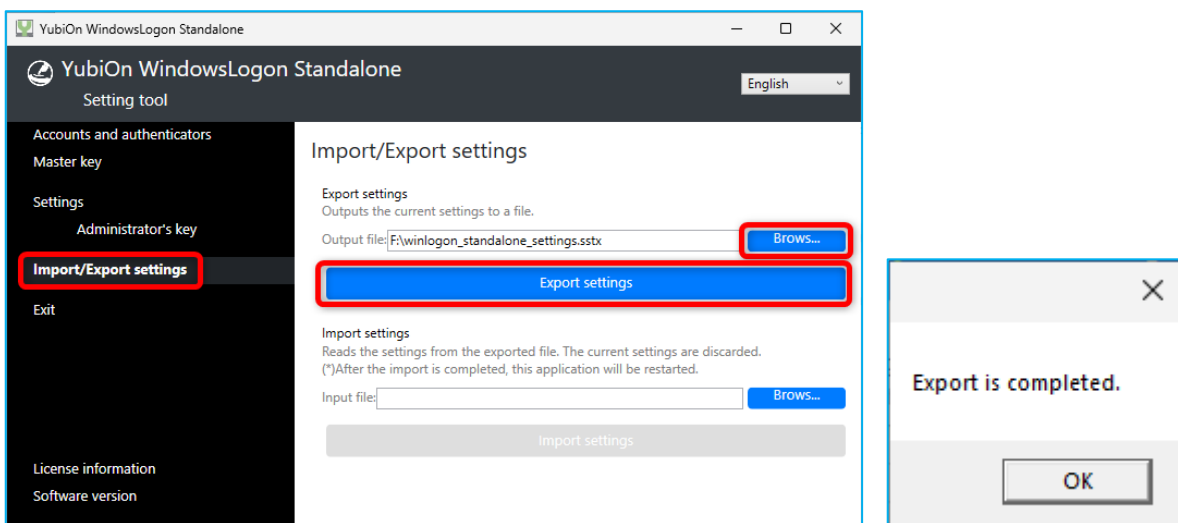
To delete a registration, select the target authenticator from the list and click the "Delete" button.

1 0. Import/Export settings

The Import/Export Settings screen allows you to export and import assignment and setting information. This is used when you want to transfer the same settings to another PC.

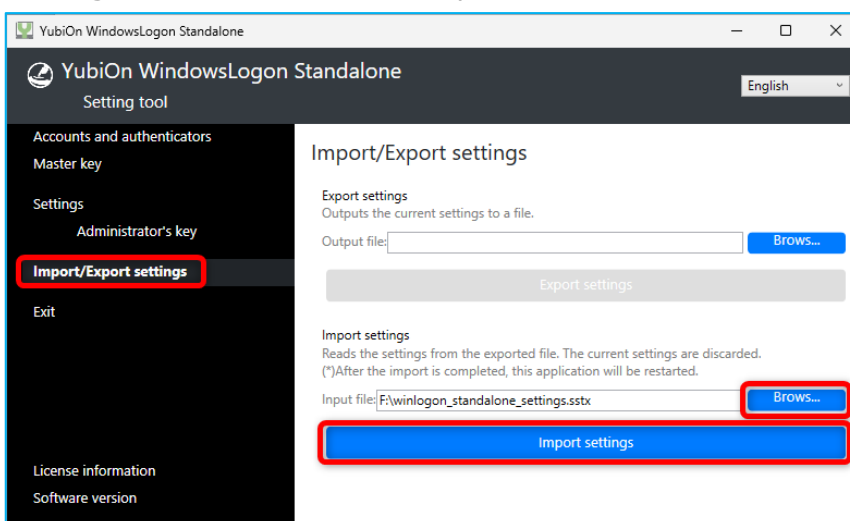
1. Export settings

You can export the current configuration status of "Accounts and authenticators", "Master key", "Settings", and "Administrator's key" to a file. Click the "Browse" button to specify where to save the file, and then click the "Export settings" button to export the file.



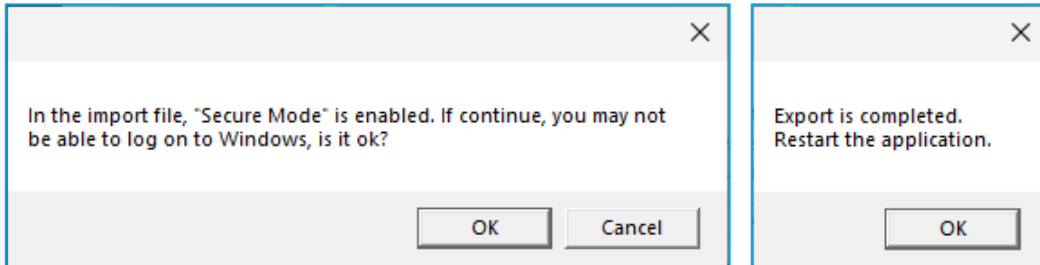
2. Import settings

Click the "Browse" button, specify the exported configuration file, and click the "Import settings" button. The settings to be exported are "Accounts and authenticators", "Master key", "Settings", and "Administrator's key". Please note that the current settings will be overwritten.



If the export setting was set to secure mode, a confirmation message will be displayed. Please note that depending on the assignment status of the imported settings, you may not be able to log on to your PC.

After importing, the setting application will restart. Please check the status of the settings after importing.



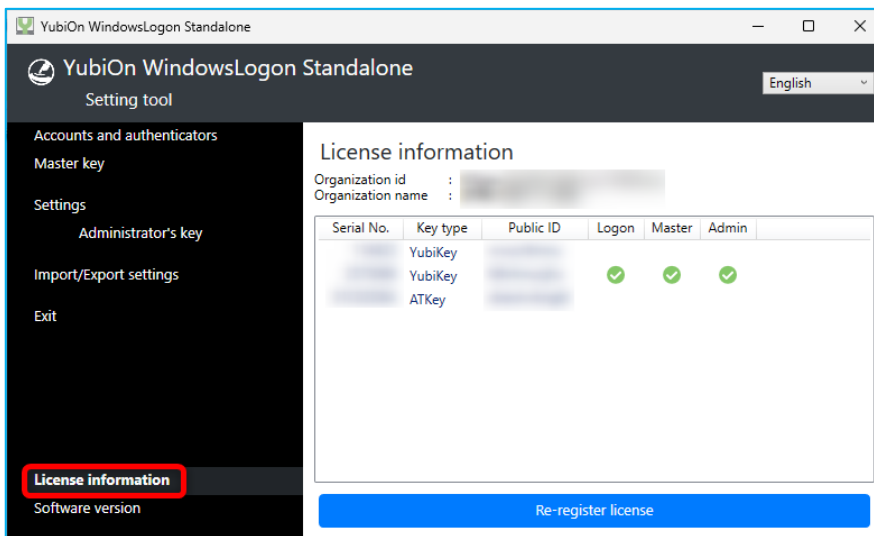
1 1. License Information

You can check the list of available authenticators in the License information screen.

1. License information

Click "License information" to display the current license information.

The "Organization id" represents the unique ID of the license, and the "Organization name" represents the name of the registered organization. You can check the list for each available authenticator.



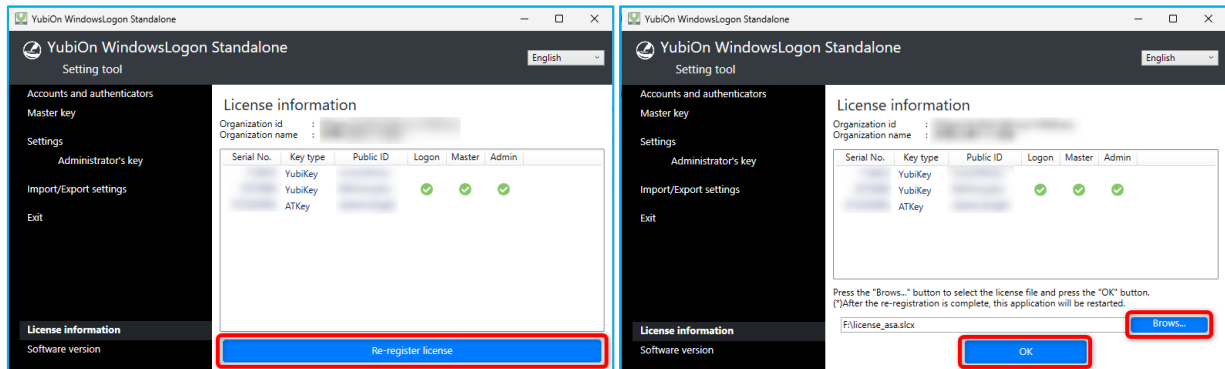
Each item in the list is as follows.

- “Serial No.” ...Indicates the serial number of the authenticator.
- “Key type” ...Indicates the type of authenticator (YubiKey / ATKey).
- “Public ID” ...Represents the first 12 characters of the authenticator OTP.
- “Logon” ...Check this box if it is already set in "Accounts and authenticators."
- “Master” ...Check this box if you have already registered a master key.
- “Admin” ...Check this box if you have already registered a Administrator's authenticator.

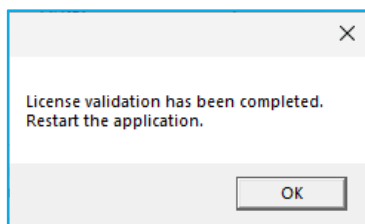
2. License Re-registration

When you repurchase a license for additional authenticators, please re-register the newly obtained license file.

Click the "Re-register license" button, click the "Browse" button to load the new license file, and then click the "OK" button.



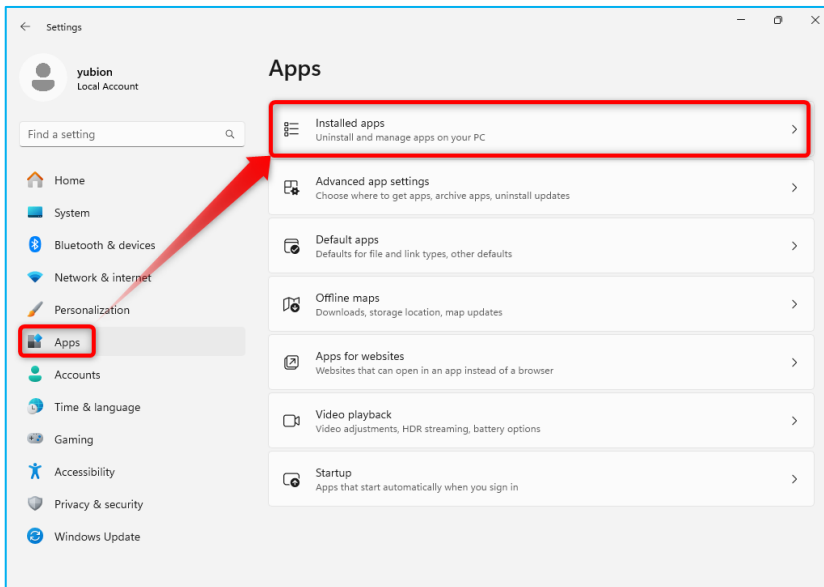
When the license is loaded correctly, the Setting tool will restart. Click "OK".



1 2. How to Uninstall

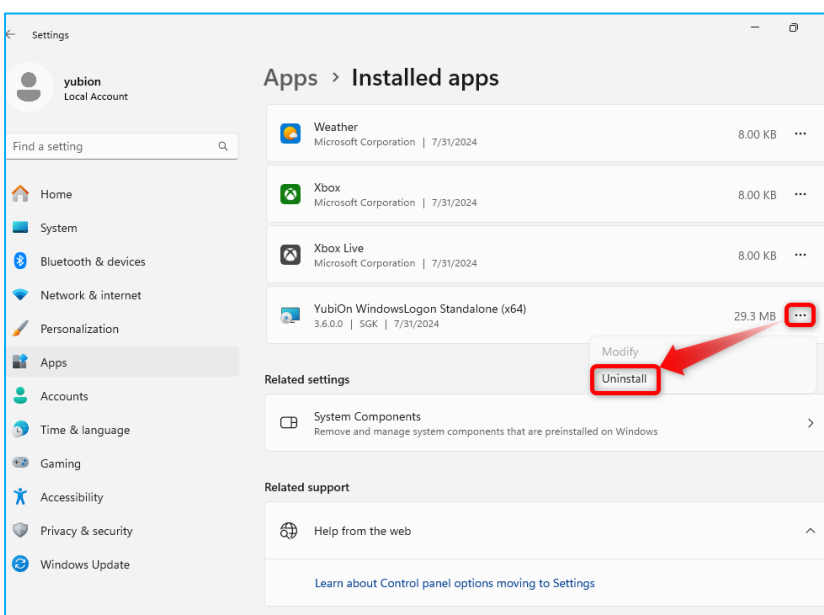
Remove this software from your computer.

1. Display Windows Settings, click on [Apps] and then [Installed apps]

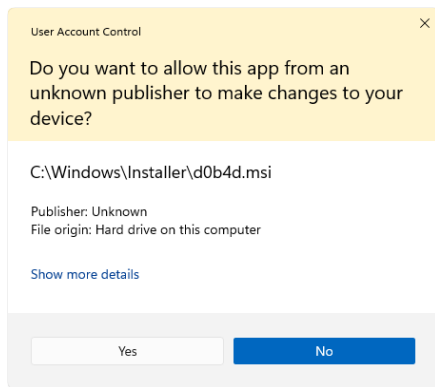


2. Perform the uninstallation

Click [...] for "YubiOn WindowsLogon Standalone" and click [Uninstall].



If a confirmation dialog is displayed, click "Yes" to start the uninstallation.



Uninstallation is complete when the completion message is displayed.

1 3. Support Information

● How to check administrative privileges

1. Open Windows Settings and go to [Accounts].
2. Click on [Your info].
3. If you see the word "Administrator" under your username on the right, you have administrator privileges.

● How to check your OS environment

1. Select [Start] > [Settings] > [System] > [About] in this order.
2. In [Device specifications] > [System type] , check whether the Windows you are running is 32bit or 64bit.

● Operating environment

Windows 10*¹ (32bit&64bit)
Windows 11*¹

Windows Server 2016
Windows Server 2019
Windows Server 2022
Windows Server 2025

CPU: 32-bit or 64-bit processor at 800 MHz or higher (1 GHz or higher recommended)

Memory: 512MB or more (1GB or more is recommended)

Storage: 100MB or more free storage space

*1 Support for detailed versions of Windows 10 and 11 follows the Microsoft support lifecycle.

● Required middleware

.NET Framework 4.5.2 or higher

● Contact Us

Please contact your sales representative or YubiOn support team.

YubiOn Support Team : support@yubion.com

● Manufacturer

SOFTGIKEN Co., Ltd. : <http://www.sgk.co.jp/>

Appendix

● About log output

The log of this application will be output to the Application log of the Event Viewer.

● Log output details

■ Event source

event source name	YubiOnWindowsLogonStandalone
--------------------------	------------------------------

■ The type of event to be output

Event Description	Level	Event data content
Logged on.	Information	Logged on. User:(User name)
Logged off.	Information	Logged off.
Locked the device.	Information	Screen is locked. User:(User name)
Unlocked the device.	Information	Screen is unlocked. User:(User name)
Authentication succeeded.	Information	Authentication by YubiOnWindowsLogon succeed. (List of Authentication Parameters) *Refer to Appendix "Authentication Parameters" for details.
Failed to authenticate.	Warning	Authentication by YubiOnWindowsLogon failed. (List of Authentication Parameters) *Refer to Appendix "Authentication Parameters" for details.

■ Authentication Parameters

Parameter name	Type	Description
User	string	This is the target user name. *This is the user name recognized by the Windows logon program and may be different from the user display name.
PublicId	string	The Public ID of the OTP used (first 12 characters of OTP). If the OTP is not recognized as an available OTP, null is returned.
Key Type	string	Type of authenticator. "YubiKey" or "ATKey". *ver. 3.6.0 or later
SerialNo	long	Authenticator's individual identification number. *Imprinted on the back of the authenticator.
IsMasterKey	bool	If the OTP used is a master key, the value will be true.
IsValidOtp	bool	The value is true if the OTP is successfully authenticated.
OtpCheckFailedReason	string	Displays the reason if the OTP authentication fails. If it succeeds, it will be null. *For details, please refer to "Reasons for OTP Authentication Failure".
AuthenticationResultStatus	string	Indicates the certification result status. *For details, please refer to "Authentication Result Status".

■ Reason for OTP Authentication Failure

Output message	(Detail section)	Contents
Not assigned OTP.		An OTP that is not assigned to the account was used.
The OTP was entered from the keyboard.		An OTP was entered from the keyboard.
Password is too short to check OTP.		The OTP could not be authenticated because the password entered was shorter than the OTP.
The OTP is invalid. Detail:(詳細)	BadOtp	Invalid OTP.
	ReplayedOtp	An OTP that has been used in the past was entered.
	Unknown	Other unexpected errors.

■ Authentication Result Status

Status name	Contents
STATUS_SUCCESS	Logon succeeded.
STATUS_INVALID_INFO_CLASS	The specified information class is not a valid information class for the specified object.
STATUS_NO_SUCH_USER	The specified user does not have an account.
STATUS_WRONG_PASSWORD	Invalid password.
STATUS_PASSWORD_RESTRICTION	Some password update rules were violated when attempting to update the password.
STATUS_LOGON_FAILURE	Logon failed.
STATUS_ACCOUNT_RESTRICTION	The user name and credentials are correct, but some user account restrictions (such as time zone restrictions) caused the authentication to fail. Some user account restrictions (such as time zone restrictions) caused the authentication to fail.
STATUS_INVALID_LOGON_HOURS	Cannot log on now because the user account has a logon time limit.
STATUS_INVALID_WORKSTATION	The user is not allowed to log on to the specified workstation.
STATUS_PASSWORD_EXPIRED	The password has expired.
STATUS_ACCOUNT_DISABLED	The account has been disabled.
STATUS_INSUFFICIENT_RESOURCES	API cannot be terminated due to insufficient system resources.
STATUS_ACCOUNT_EXPIRED	The account has expired.
STATUS_PASSWORD_MUST_CHANGE	The account requires a password change at the next logon.
STATUS_ACCOUNT_LOCKED_OUT	The account has been locked out.
Other numbers	The error does not apply to the above.