



YubiOn Device Settings Tool MANUAL

2024.02.14



Table of contents

1. Summary	3
2. Install	4
2.1. Installation procedure	4
3. Application Launch	7
3.1. How to start①	7
3.2. How to start②	7
3.3. Precautions	7
4. Screen Description	8
4.1. Main functions	8
4.2. Language switchover	9
4.3. Version display	9
5. YubiKey Rewriting Procedure	10
5.1. Simple rewriting	10
5.2. Continuous rewriting	12
6. Output CSV	15
6.1. CSV Format	15
6.2. Notes on output	15
7. Uninstall	16
7.1. Uninstallation procedure①	16
7.2. Uninstallation procedure②	16
Copyright	17
Contact us	17

1. Summary

YubiOn Device Settings Tool is an application to rewrite YubiKey's private key information.

YubiKey's OTP is factory configured to authenticate only on Yubico's authentication server.

YubiOn Device Settings Tool changes the settings (private key information) of this YubiKey so that it can be used by services that require the rewritten YubiKey, such as our product YubiOn WindowsLogon Standalone.

When you use YubiOn WindowsLogon Standalone, we sell YubiKeys with rewritten private key information. However, if we cannot send you YubiKeys, or if you want to reuse a YubiKey that you already have, you can use our products with that YubiKey by rewriting it yourself.

Note: Rewriting YubiKey's private key information will delete the factory default private key information. Please use a YubiKey that has no problem with rewriting, as you will not be able to authenticate if you have used it for other services.

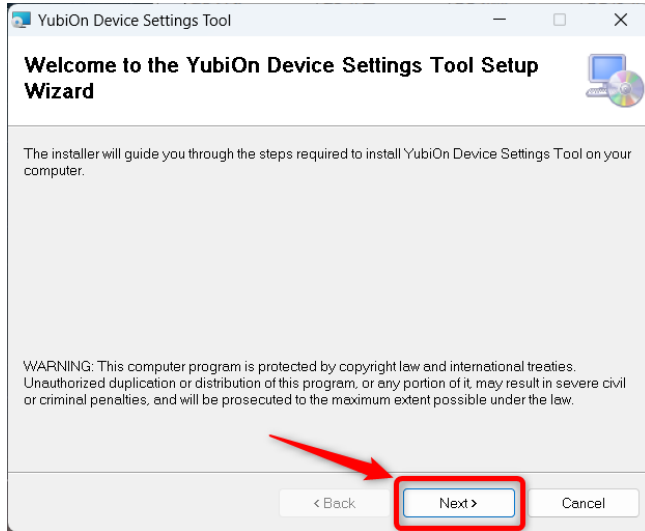
Operating environment

- Windows 10 (64bit)
- Windows 11

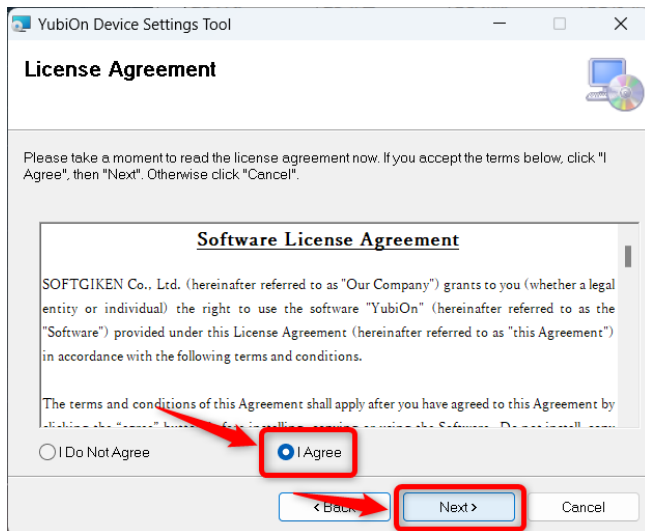
2. Install

2.1. Installation procedure

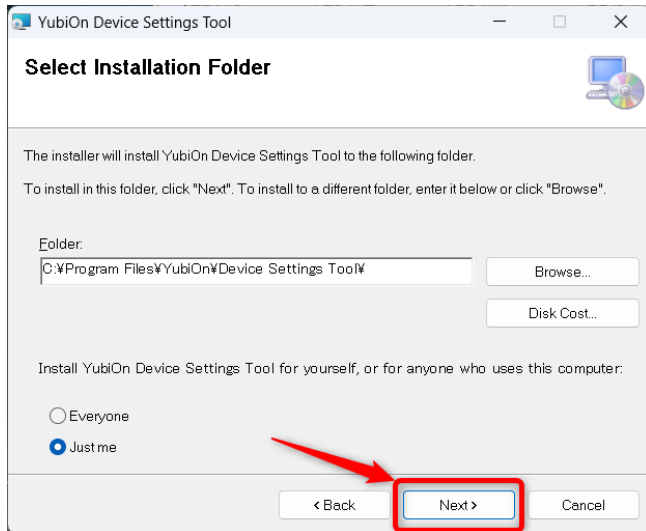
- 1 Run DeviceSettingsToolSetup.msi.
- 2 Welcome: Click the "Next" button.



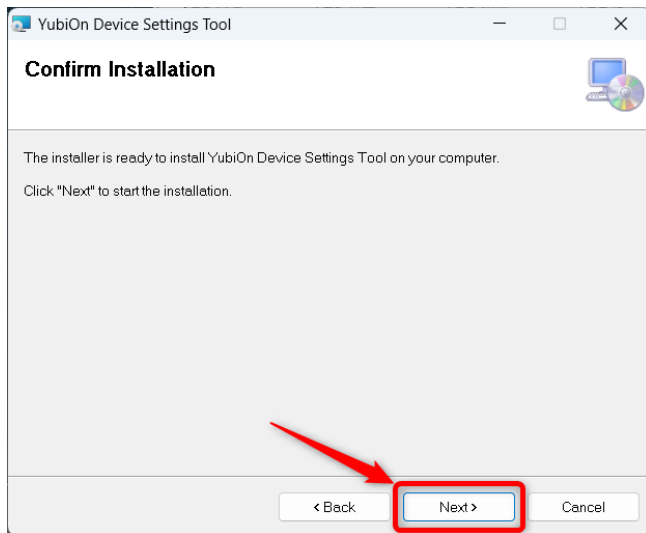
- 3 License Agreement: After reviewing the license agreement, select "I Agree" and click the "Next" button.



- 4 Select Installation Folder: After selecting the following, click the "Next" button.
- Installation folder
 - Everyone / Just me

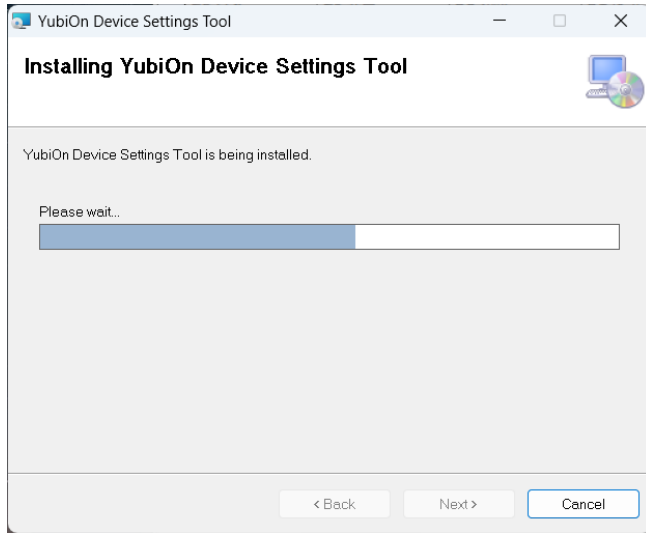


- 5 Confirm Installation: Click the "Next" button.

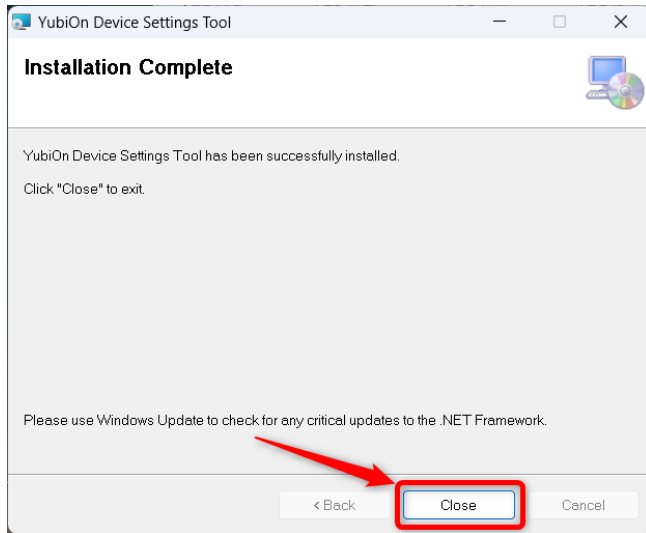


6 Installing: Installation starts.

Click "Yes" when the User Account Control screen appears.



7 Installation Complete: After installation is complete, click the "Close" button.

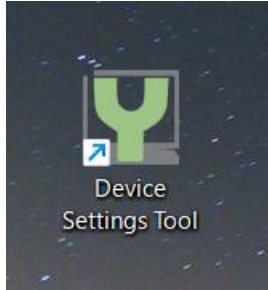


After successful installation, shortcuts to the "Device Settings Tool" will be created on the desktop and in the Start menu.

3. Application Launch

3.1. How to start①

Click on the "Device Settings Tool" icon on the desktop.



3.2. How to start②

Open the Start menu and click on "Device Settings Tool".

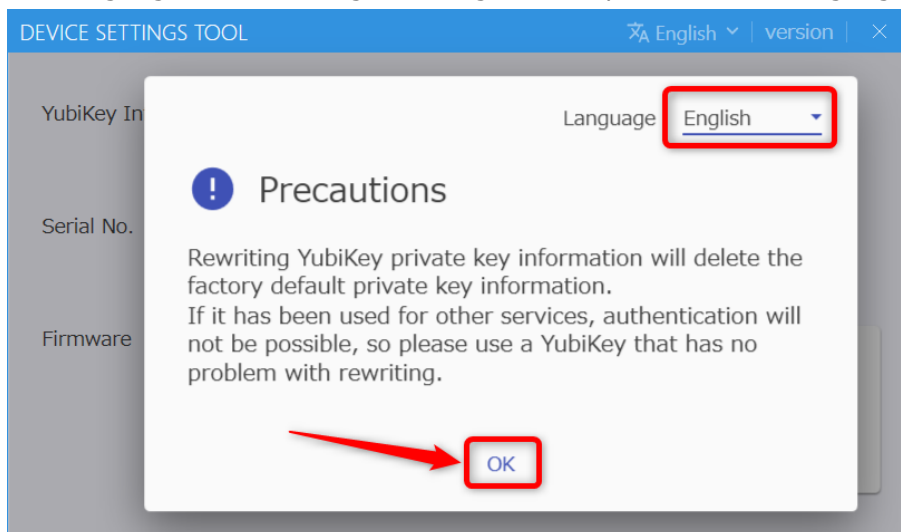
Tips: "Device Settings Tool" can be found in the "D" item of the Start menu or in the "YubiOn" folder (may vary depending on your environment).

3.3. Precautions

Immediately after startup, a precautions message is displayed each time.

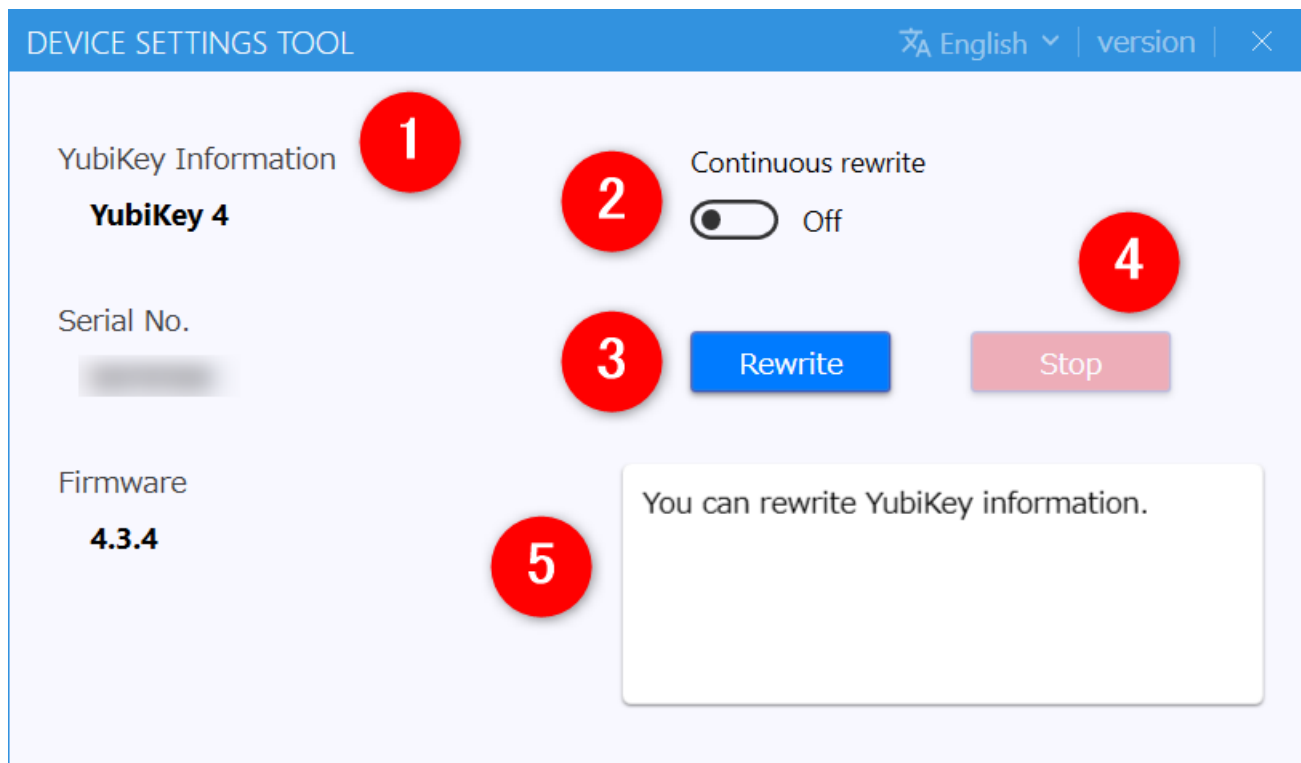
After reviewing the notes, click the "OK" button to close.

The language can be changed to English or Japanese in the language menu.



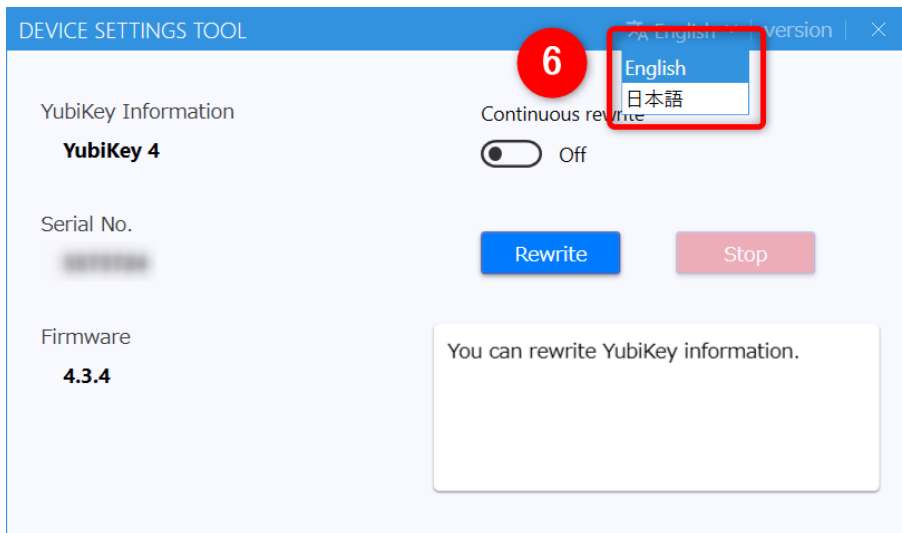
4. Screen Description

4.1. Main functions



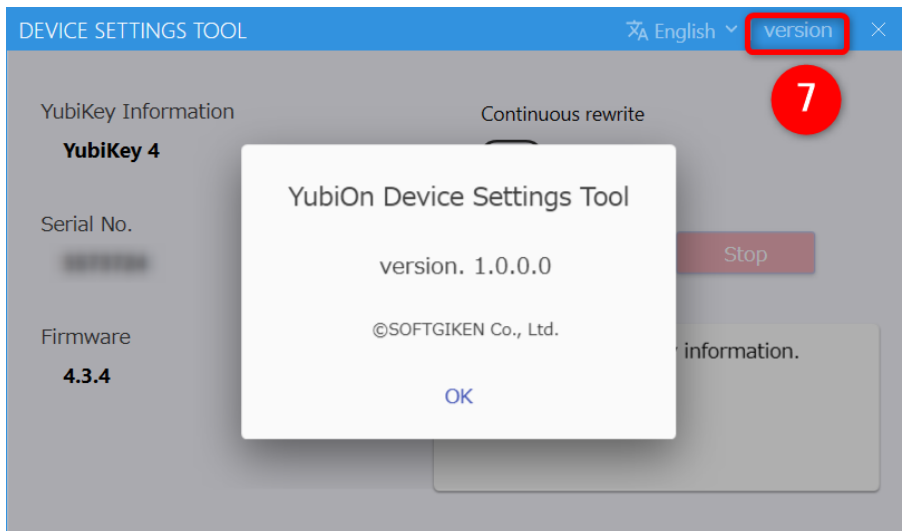
- ① YubiKey Information: Displays information about the YubiKey currently inserted in the USB port.
(Blank if no YubiKey is inserted or if multiple YubiKeys are inserted.)
 - YubiKey type
 - Serial number
 - Firmware
- ② Continuous rewrite mode: Continuous rewrite mode can be switched only when YubiKey is inserted (when rewritable).
- ③ Rewrite: Rewriting of YubiKey information can be executed only when YubiKey is inserted.
(when rewritable).
- ④ Stop: The continuous rewriting in progress can be canceled (stopped).
- ⑤ Status: YubiKey's rewrite status, removal and insertion instructions, and tooltips are displayed.

4.2. Language switch



⑥ Language switch: You can switch the content display between English and Japanese.

4.3. Version display



⑦ Version display: Displays the version of this application.

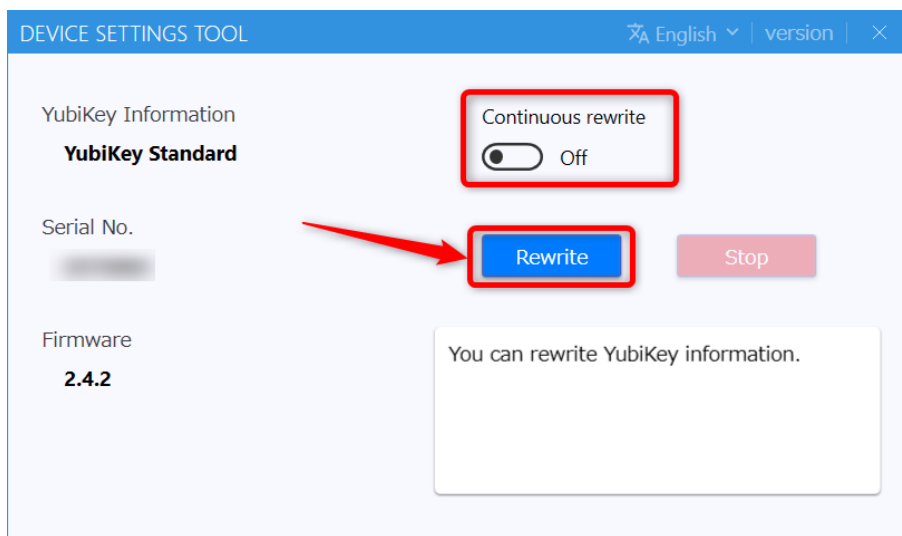
5. YubiKey Rewriting Procedure

YubiKey rewritten After rewriting, the rewritten information is output to a CSV file.

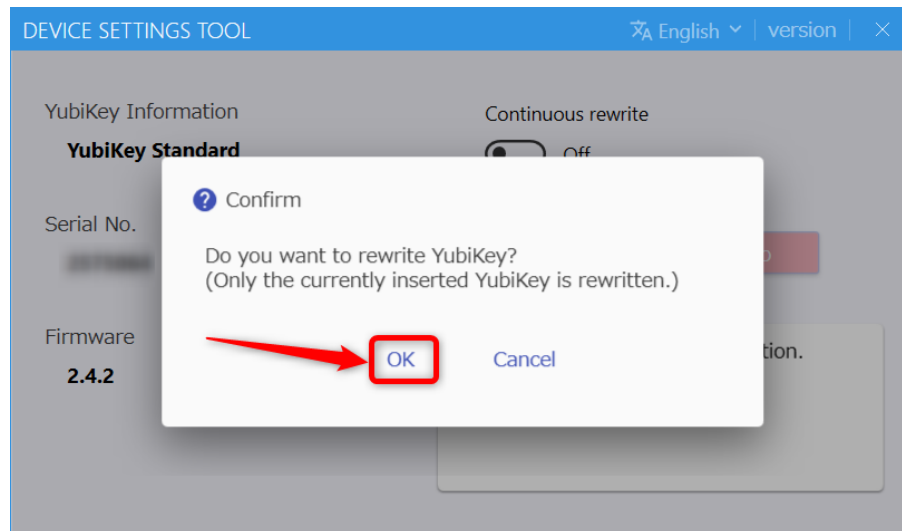
5.1. Simple rewriting

This is the procedure for rewriting **only one** YubiKey.

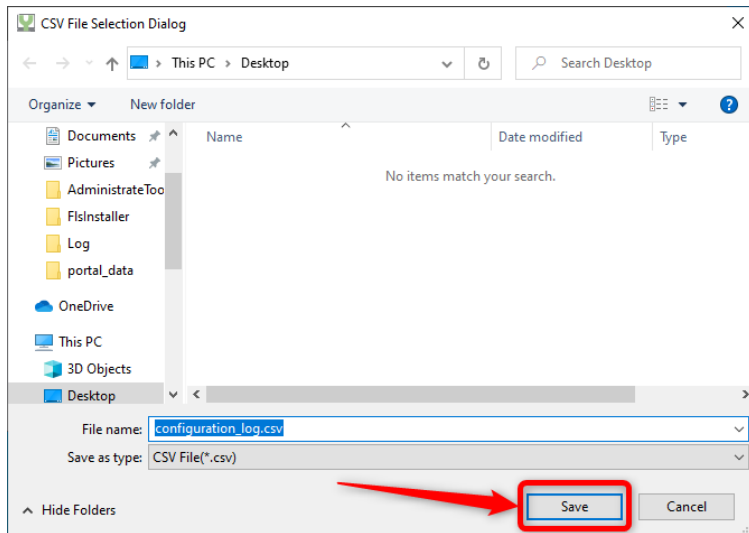
- 1 Insert a YubiKey to be rewritten.
- 2 Confirm that the continuous rewrite mode is "Off" and click the "Rewrite" button.



- 3 When a confirmation message appears, click "OK".



- 4 Select a CSV file to output the rewritten information and click the "Save" button.
The default name of the CSV file is "configuration_log.csv".



If you select a CSV file that has already been generated, a reconfirmation message will appear asking if you wish to continue with the overwrite process, click the "OK" button.

Rewriting of YubiKey information is executed and the rewritten information is output to a CSV file.

Rewriting of a single YubiKey is completed.

If you want to continue rewriting, repeat the above steps 1-3.

There is no need to select CSV again. It will be added to the selected CSV.

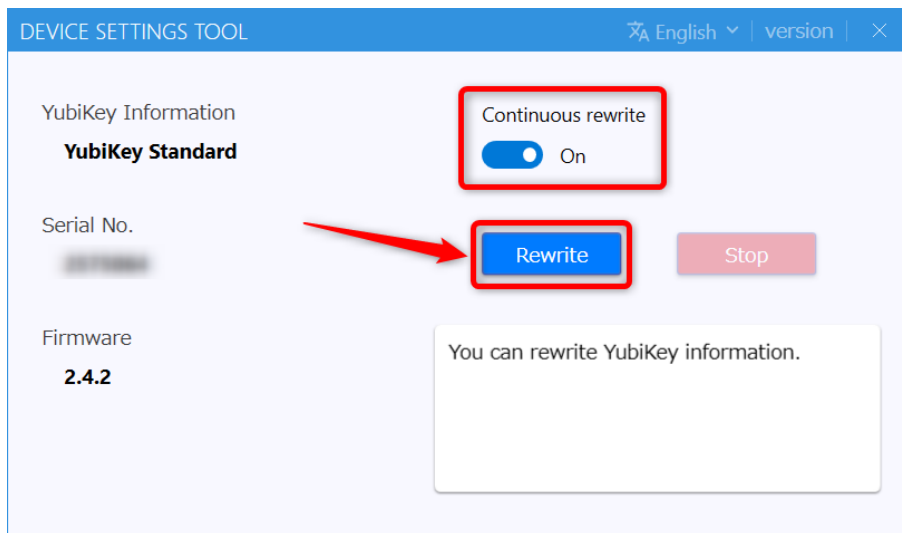
(If you wish to select the CSV again, please restart this tool.)

5.2. Continuous rewriting

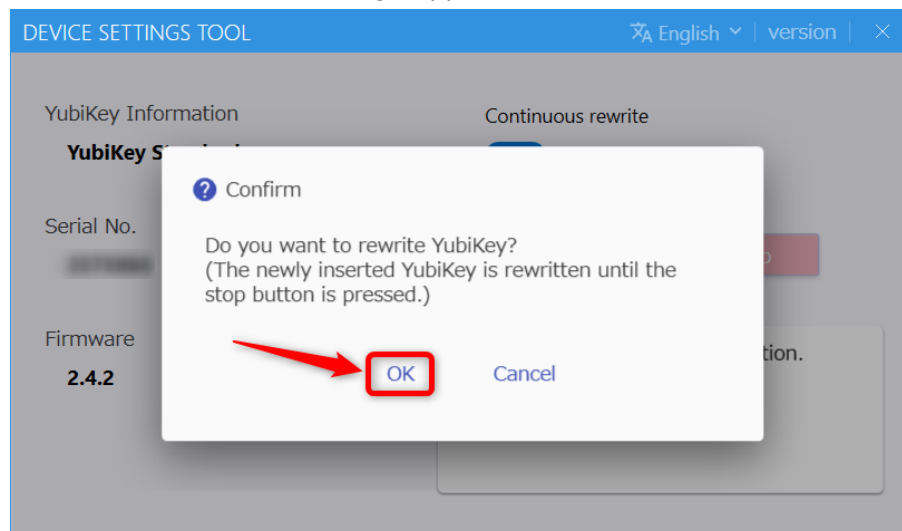
Procedure for rewriting multiple YubiKeys **in succession**.

Note: During continuous rewriting, rewriting is performed only by removing and inserting the YubiKey (when it is ready to be rewritten). To prevent unwanted rewriting, be sure to click the "Stop" button to cancel the continuous rewriting state after the work is finished.

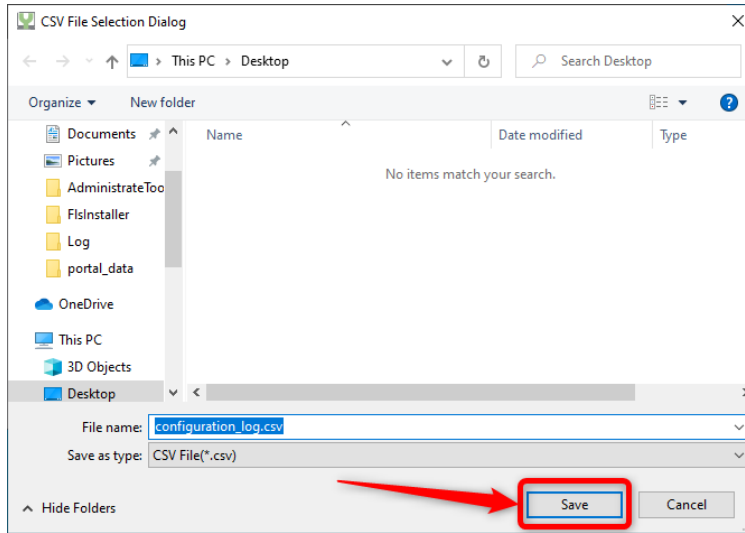
- 1 Insert a YubiKey to be rewritten.
- 2 Confirm that the continuous rewrite mode is "On" and click the "Rewrite" button.



- 3 When a confirmation message appears, click "OK".

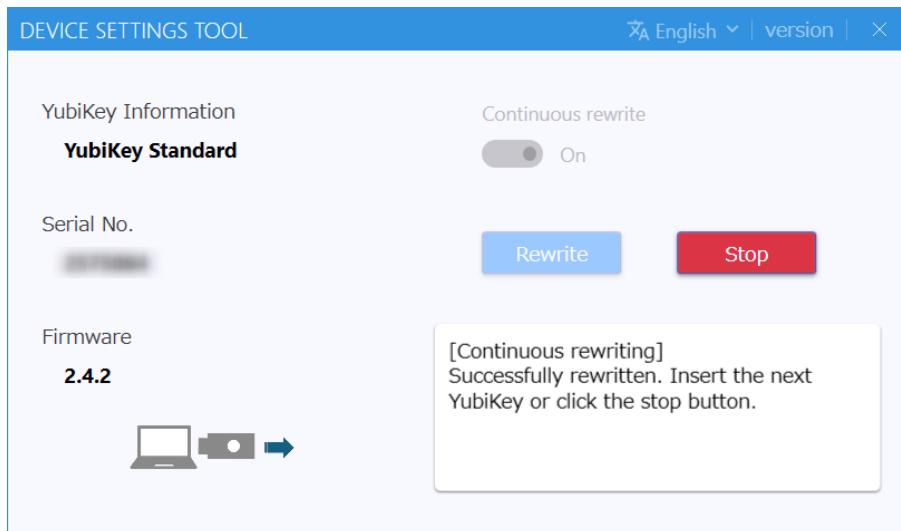


- 4 Select a CSV file to output the rewritten information and click the "Save" button.
The default name of the CSV file is "configuration_log.csv".

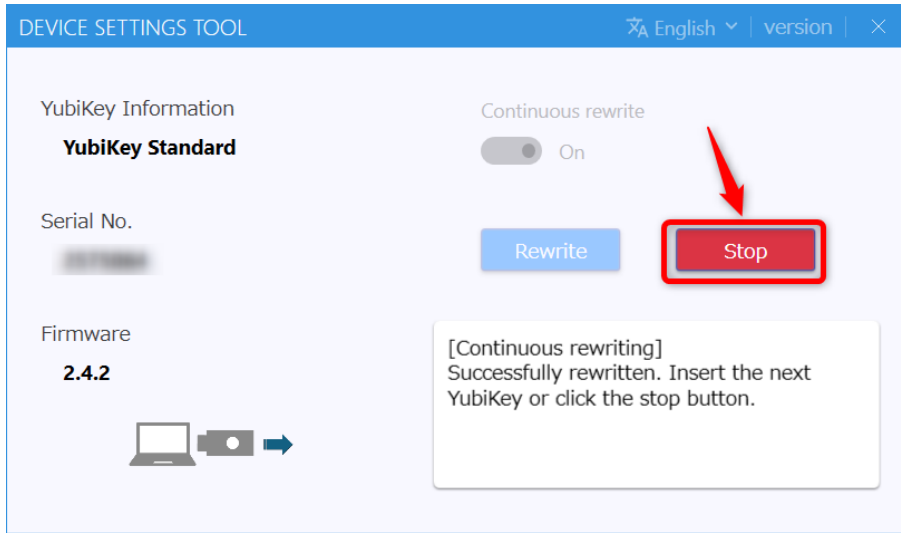


If you select a CSV file that has already been generated, a reconfirmation message will appear asking if you wish to continue with the overwrite process, click the "OK" button.

- 5 A message indicating that the rewriting process has been successfully completed is displayed. Remove the rewritten YubiKey and insert the next YubiKey you wish to rewrite into the USB port.
The rewriting process is performed simply by inserting the device into a USB port.



- 6 When YubiKey has been rewritten in one step, click the "Stop" button to end the continuous rewriting process. When a confirmation message appears, click "OK".



Continuous rewriting of YubiKey is finished.
The rewritten information is registered in CSV.

6. Output CSV

Explanation of CSV output after YubiKey rewriting.

6.1. CSV Format

One record is equivalent to one YubiKey.

1	Serial number
2	Public identity
3	Private identity
4	Private key
5	Reserve (12 digit 0)
6	Registration date and time

e.g.

```
99900000,vvccccccccc,1a000000000,00000000000000000000000000000000,000000000000,2024-02-14T16:32:30,  
99900001,vvcccccccd,1a000000001,00000000000000000000000000000001,000000000000,2024-02-14T16:45:13,
```

6.2. Notes on output

- After outputting the CSV file, you do not need to re-set the destination CSV file while the tool is running. If you wish to select again, restart the tool.
- If you rewrite the same YubiKey again with the same CSV file selected after outputting the CSV file, only the rewritten YubiKey information will be overwritten. The rewritten information of other YubiKeys that have already been output will remain as is.

7. Uninstall

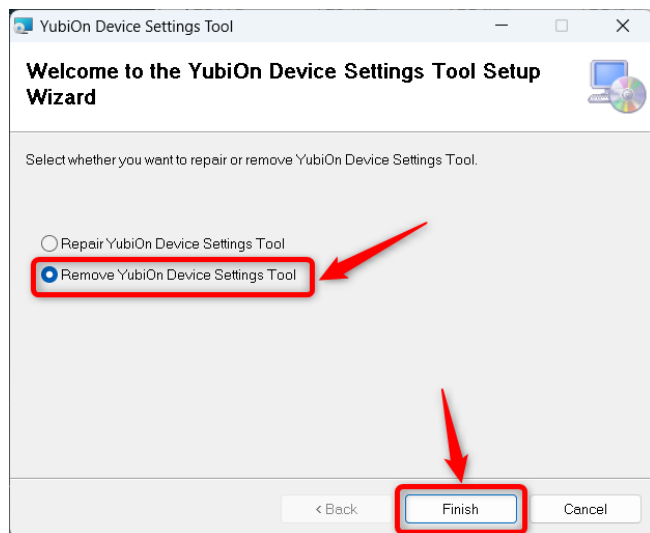
7.1. Uninstallation procedure ①

- 1 Start the Control Panel.
- 2 Select "YubiOn Device Settings Tool" from Programs > Programs and Features.
- 3 Click "Uninstall" and click "Yes" on the confirmation message.

Uninstallation is performed.

7.2. Uninstallation procedure ②

- 1 Run the DeviceSettingsToolSetup.msi file used for installation.
- 2 Select "Remove YubiOn Device Settings Tool" and click the "Finish" button.
Click "Yes" when the User Account Control screen appears.



- 3 Uninstallation is performed.
After the uninstallation is successfully completed, click the "Close" button to close the wizard.

Copyright

©2024 SoftGiken Co., Ltd. All rights reserved.

Contact us

SoftGiken Co., Ltd.

6th Floor, Shibuyasakuragaoka Building,

4-23, Sakuragaoka-cho, Shibuya-ku, Tokyo,

150-0031, Japan

yubion@sgk.co.jp